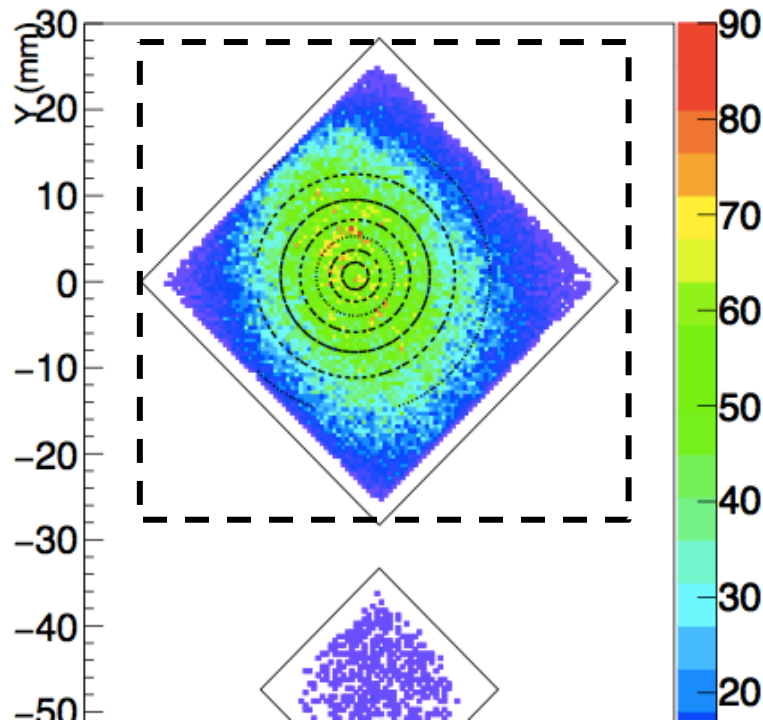


Final beam center & backward asymmetries

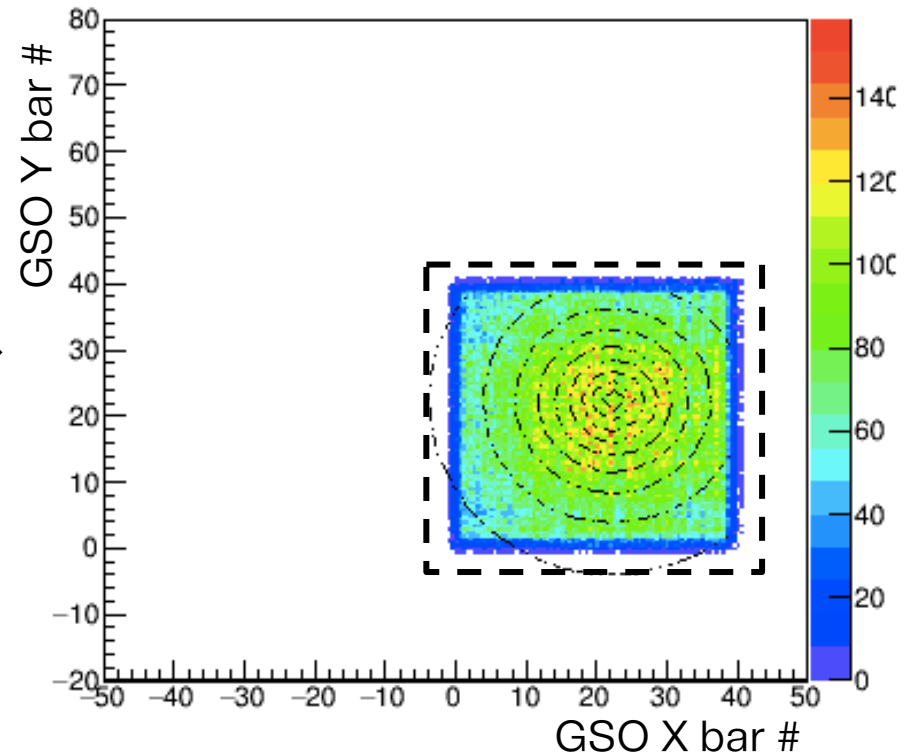
10 Sep. 2019
Minho Kim

Beam center of bottom and middle Pos. run

Before bottom position run -
dedicated leakage map was
used.

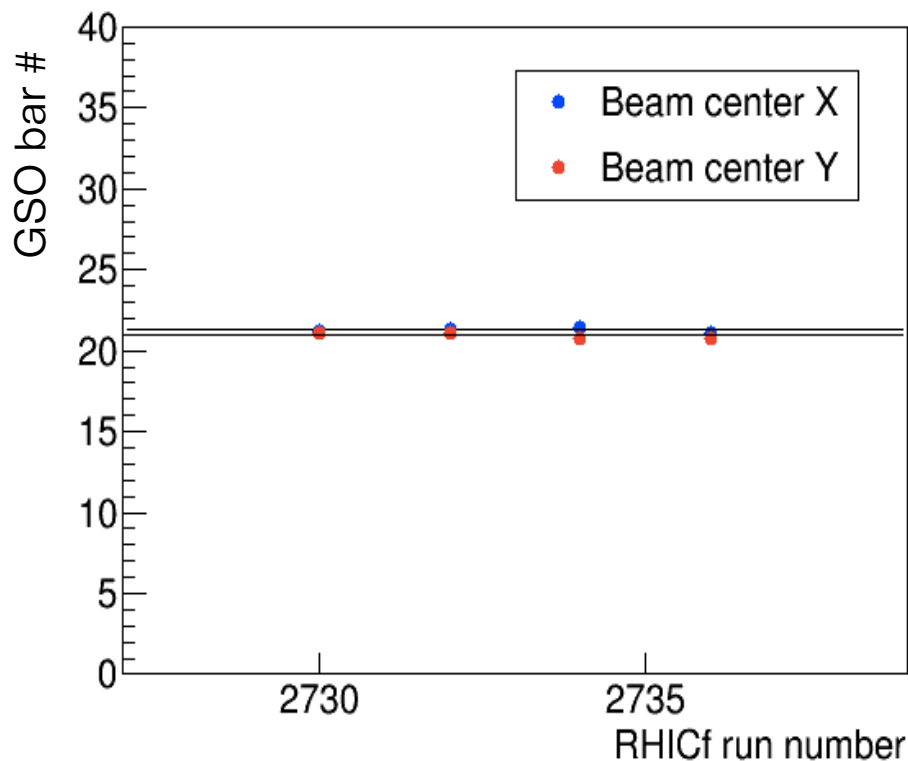
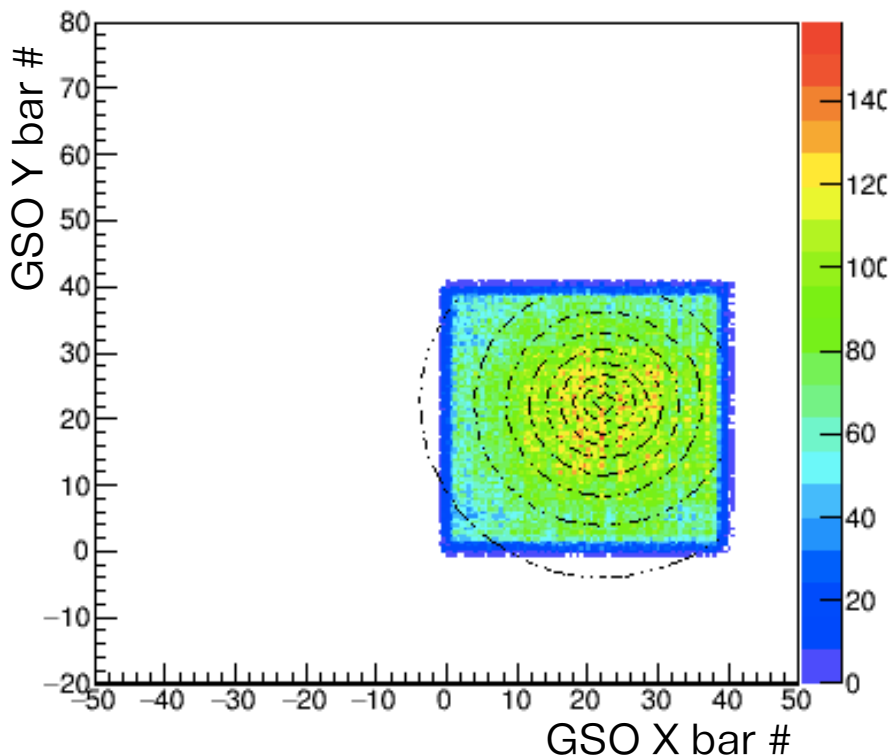


After ~ ~



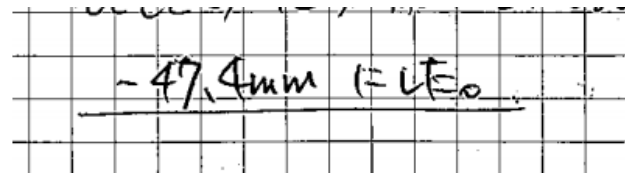
- Hit map by GSO bar # was used for beam center fitting considering fitting range (dashed line).

Beam center of bottom and middle Pos. run



Run type	Bottom	Middle
By hit (mm)	(-0.5, 1.5)	(N/A, N/A)
By scan (mm)	(N/A, 2.7)	(N/A, 2.8)

Bottom → Middle



Beam center of middle position run

