

True 2D XY Position Distribution

Slide 1

Benard Mulilo [KU/RIKEN]

[I. Nakagawa, R. Seidl, Y. Goto, A. Bazilevsky]

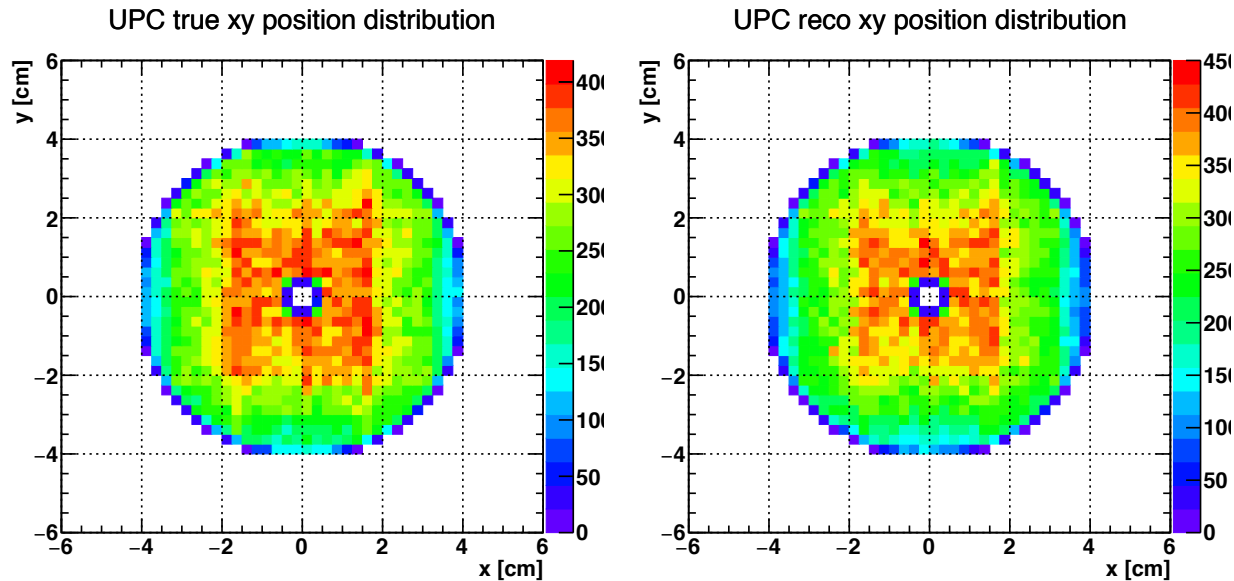
[2019/12/19 @ 21:00 KST]

Radiation Laboratory Meeting

2D XY Plot – Un-polarized UPC

Slide 2

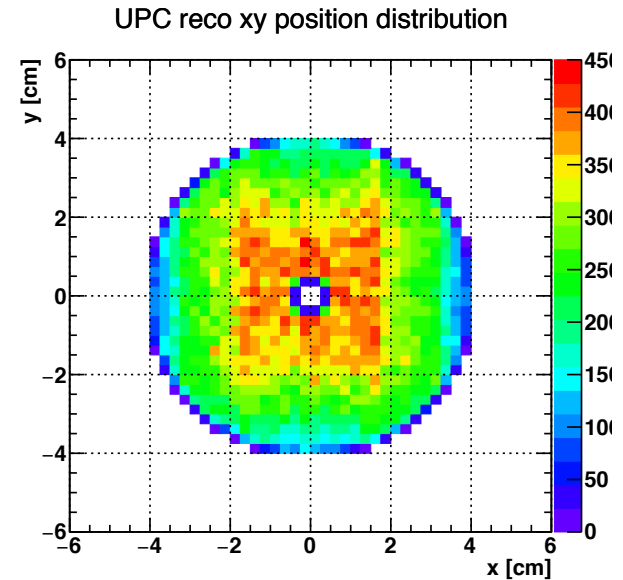
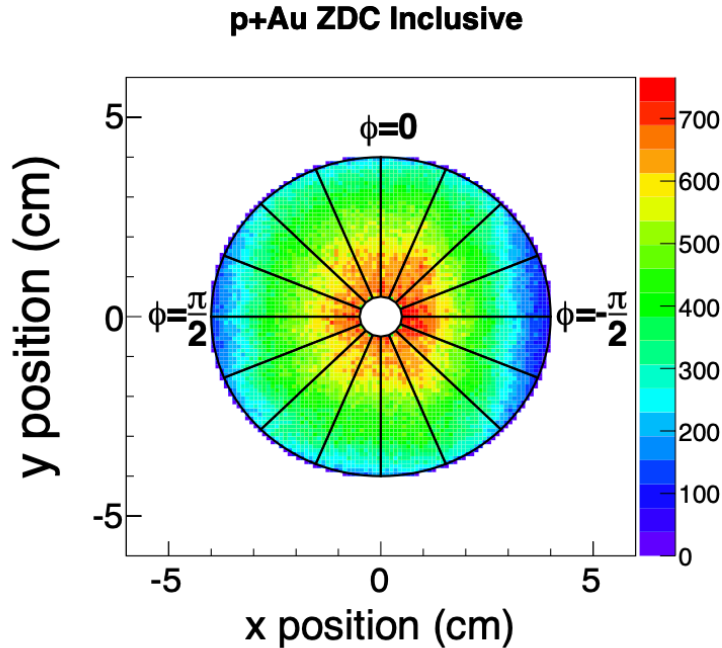
True (left) and reco (right) xy distributions for un-polarized UPC



- © Both true and reco xy position distributions show square shape.
- © For reco, it is understandable because of various combined detector effects plus square shape of ZDC.
- © For true, it is unphysical to see a similar square shape like in reco , so I need to check further this true distribution properly.

2D XY Distribution – Data and UPC

Slide 3



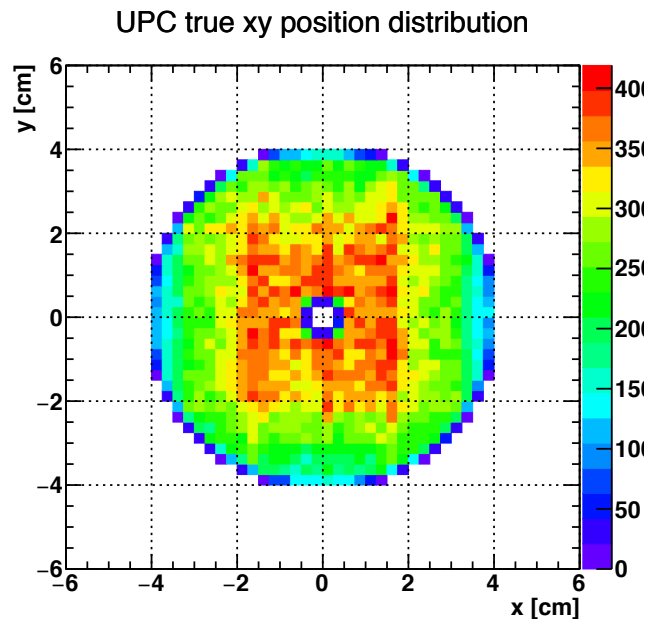
- ⌘ XY plot for pAu from Minjung's analysis note.
- ⌘ Combines various detector effects hence visible square shape.
- ⌘ Square shape may also be due to square shape of our ZDC detector.

- ⊙ Current reco xy plot from un-polarized UPC MC exhibits similar features as pAu data plot for similar reasons.
- So shape is understandable.

True XY Position Distribution - UPC

Slide 4

This is unphysical to observe square shape in true xy spectrum seen so far below:



So I have until early next week to thoroughly finish checking this square shape in true xy plot. I am doing this by:

- ⌘ Making true xy position distribution without applying any cut.
- ⌘ Making xy plot for each cut applied. These checks will provide us more information.