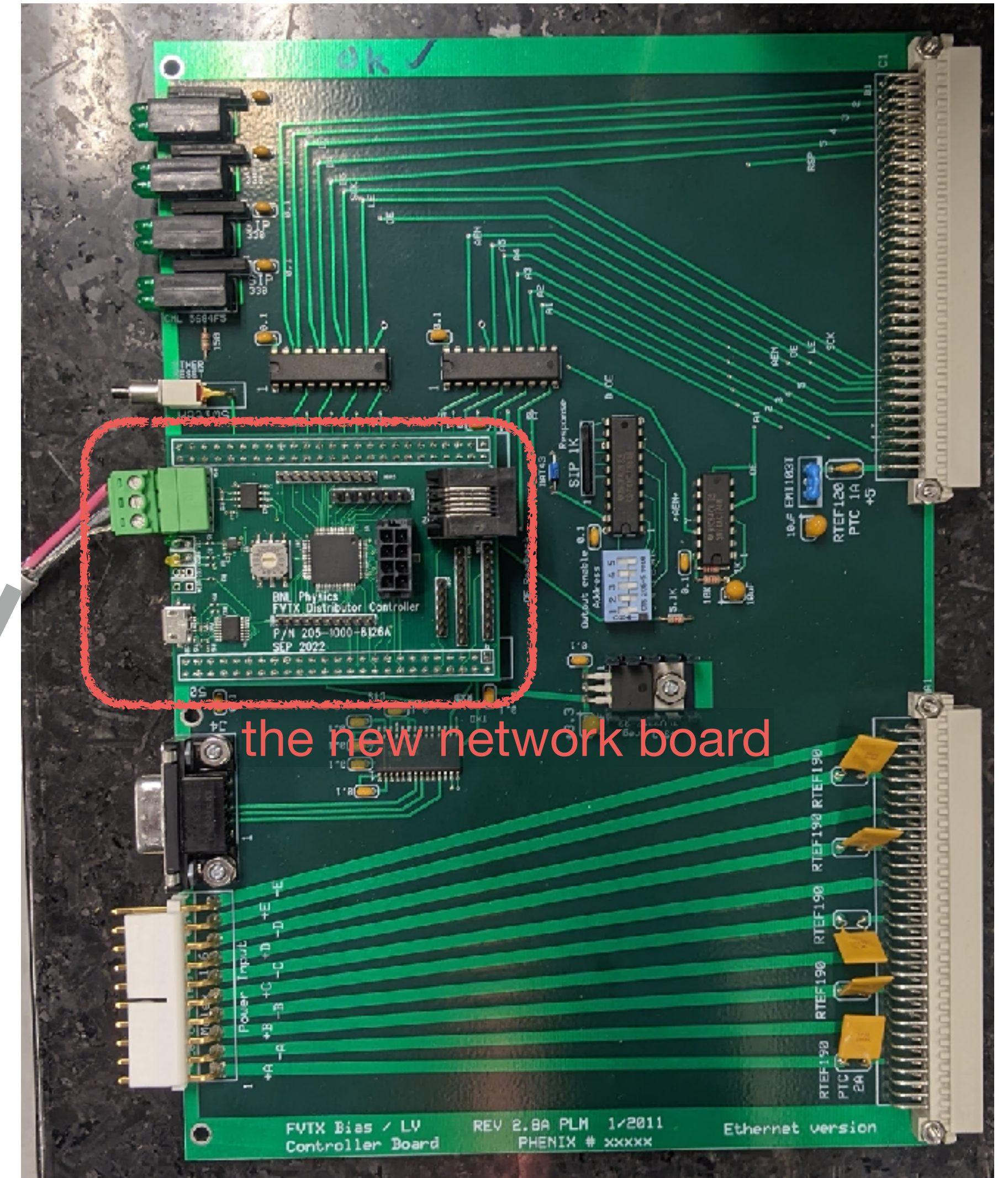
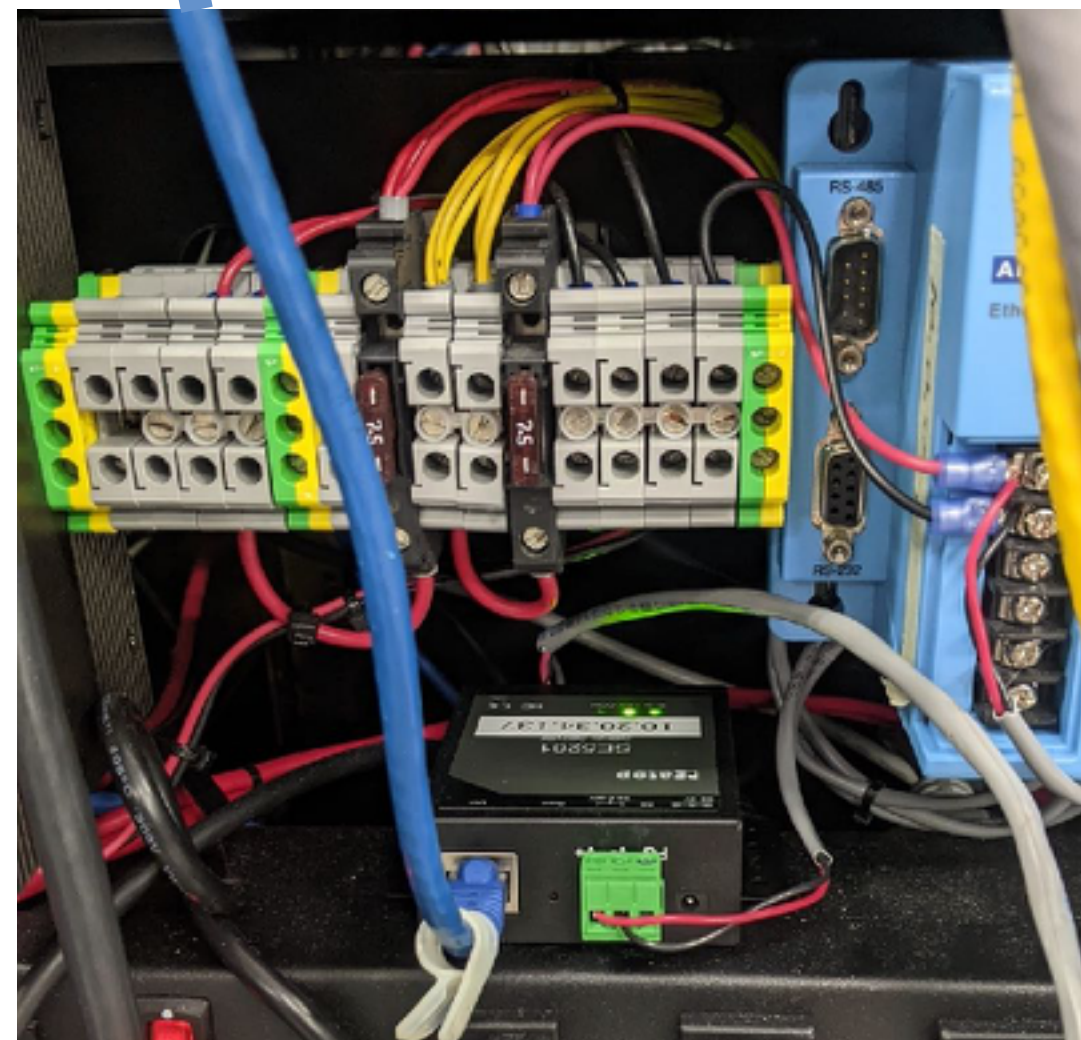


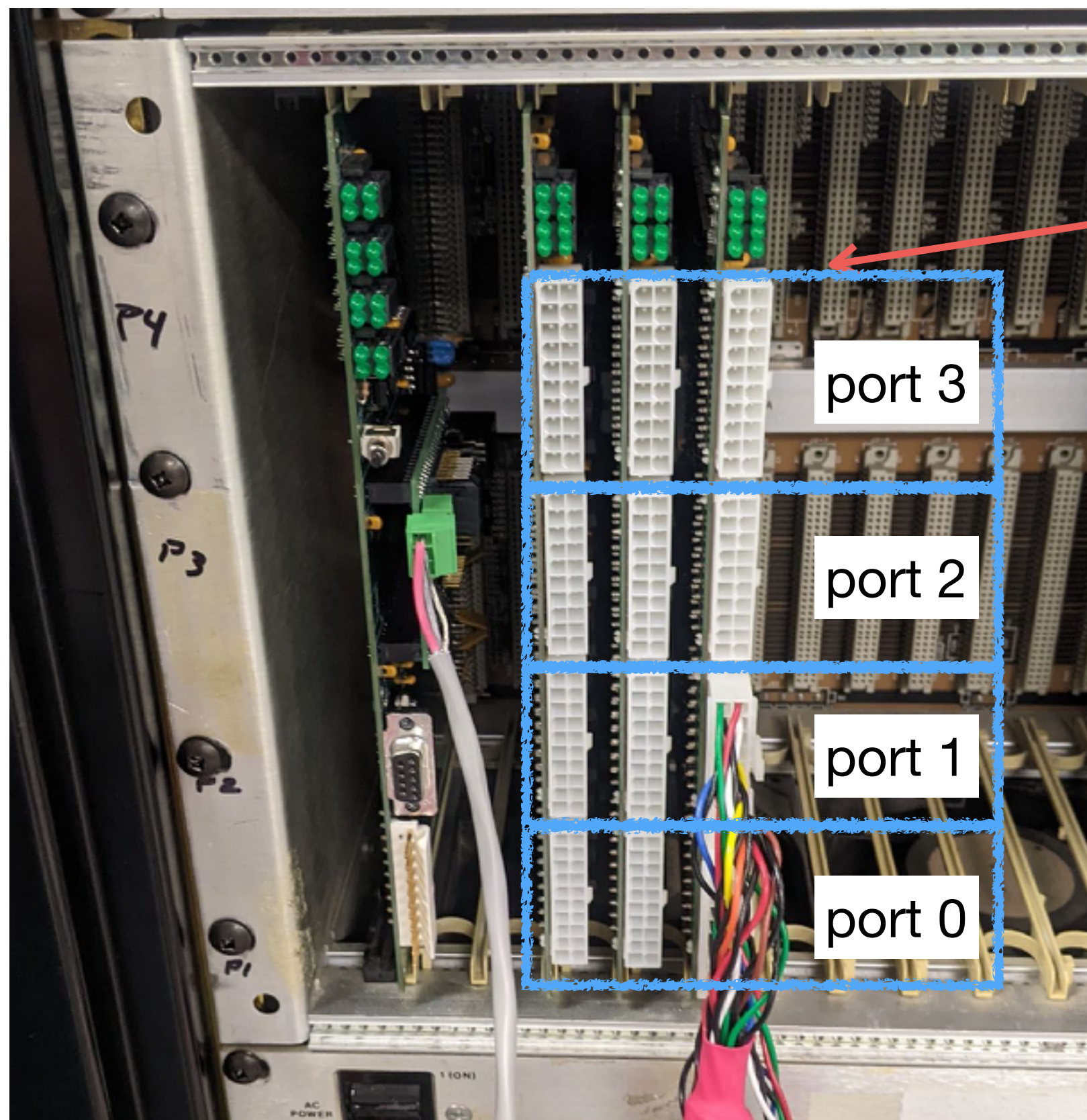
The new network card for the FPHX LV
G. Nukazuka (RBRC)

The new network card



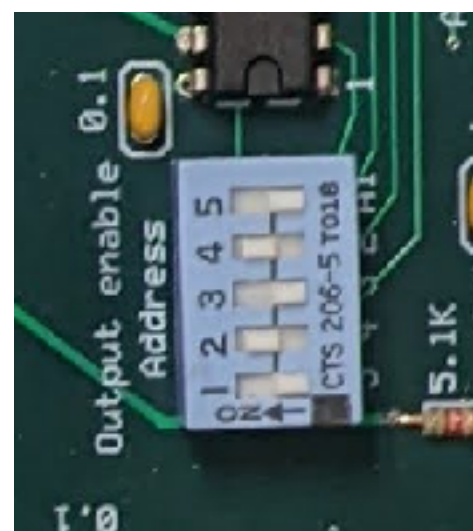
The controller module itself is the same

Operation



The filter board

- 1: ON→0
 - 2: ON→0
 - 3: OFF→1
 - 4: ON→0
 - 5: ON→0
- ∴address = $(00100)_2 = (4)_{10}$



I'm not sure how it works...

The controller board

```
Connection:  
telnet 10.20.34.137 4660
```

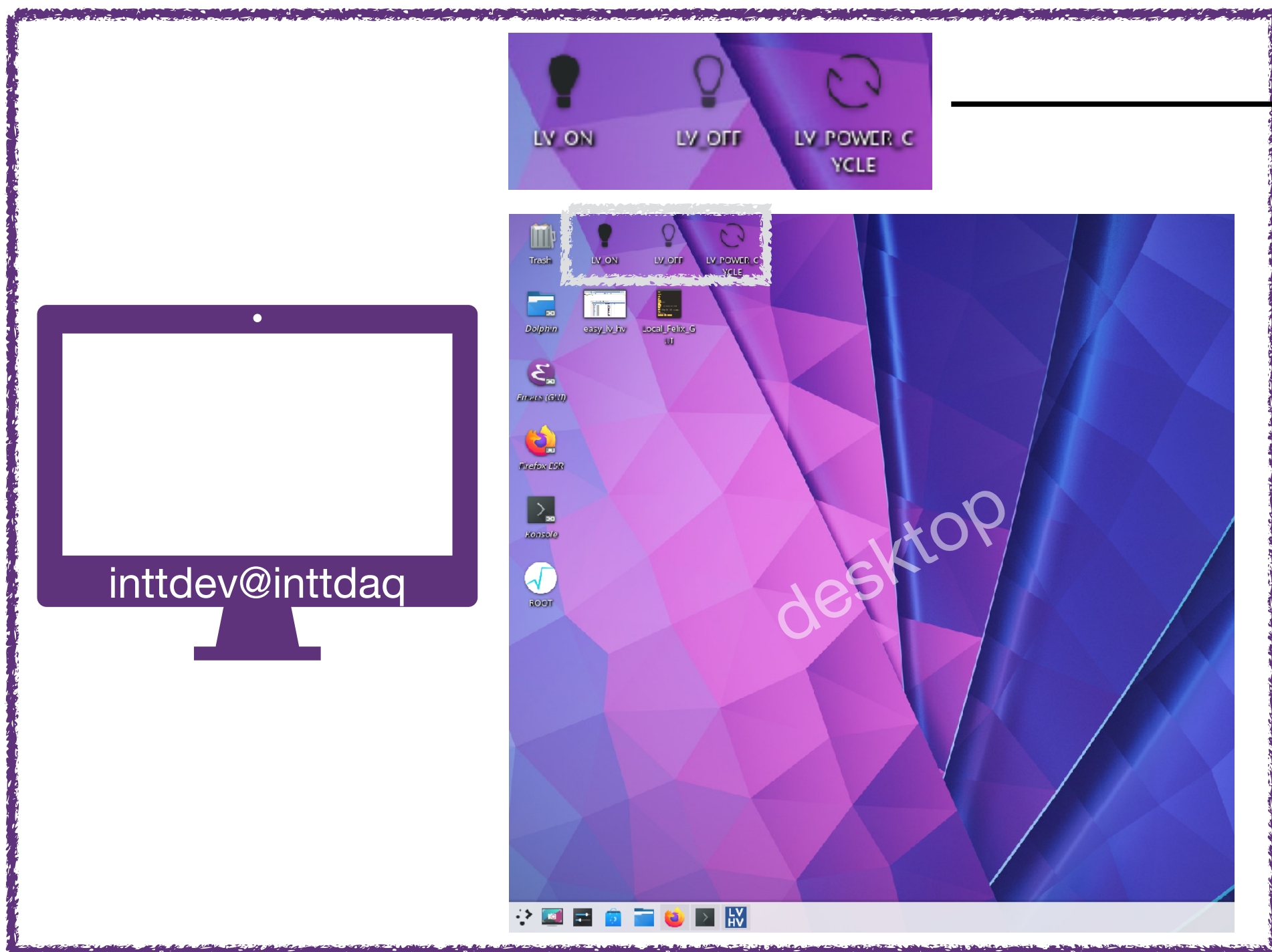
```
Command:  
$E[AA][C][Bana][Bdigi]
```

[AA]: the address of the filter board (2 digits)
[C] : the connector number to be operated
[B_{ana}] : Analog enable bits ()
[B_{digi}]: Digital enable bits ()

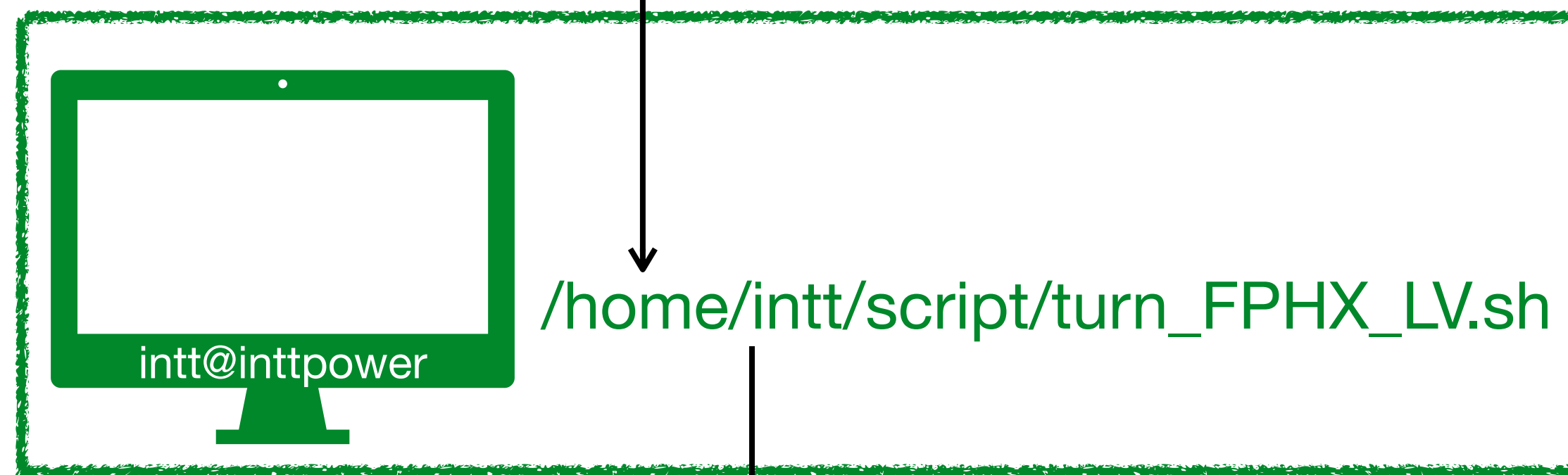
```
For example: $E043FF  
Turning ON all analog&digital lines of the port3 in the  
module04
```

```
For example: $E01200  
Turning OFF all analog&digital lines of the port2 in  
the module01
```

Operation

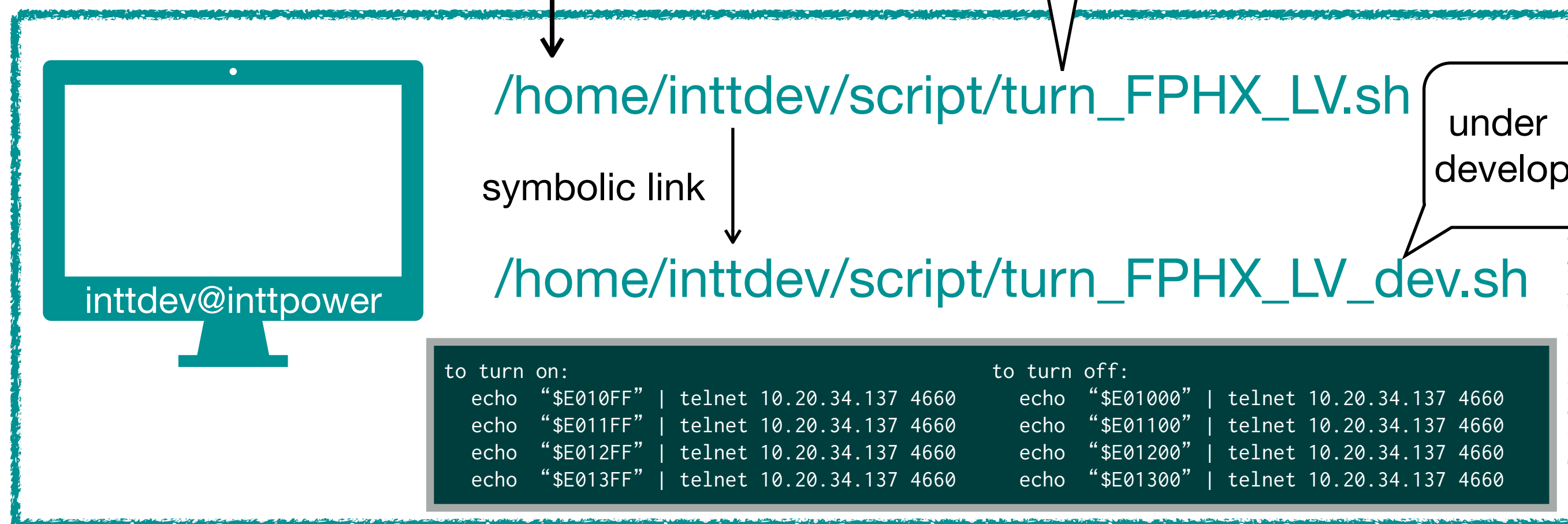


running a script by clicking



symbolic link

You can replace it once a release version is made



under development