



Communication

Takashi Kishida

The Principal of Nishina School,
The Chief Editor of Nishina Center News,
RIKEN Nishina Center

- What is Communication ?
- Strategy of Presentation
- Science Communication

What is Communication ?

Telephone

Letter

Reading Novels

E-mail

Moral

Sense of Value

Education

Discussion

Greetings

Presentation

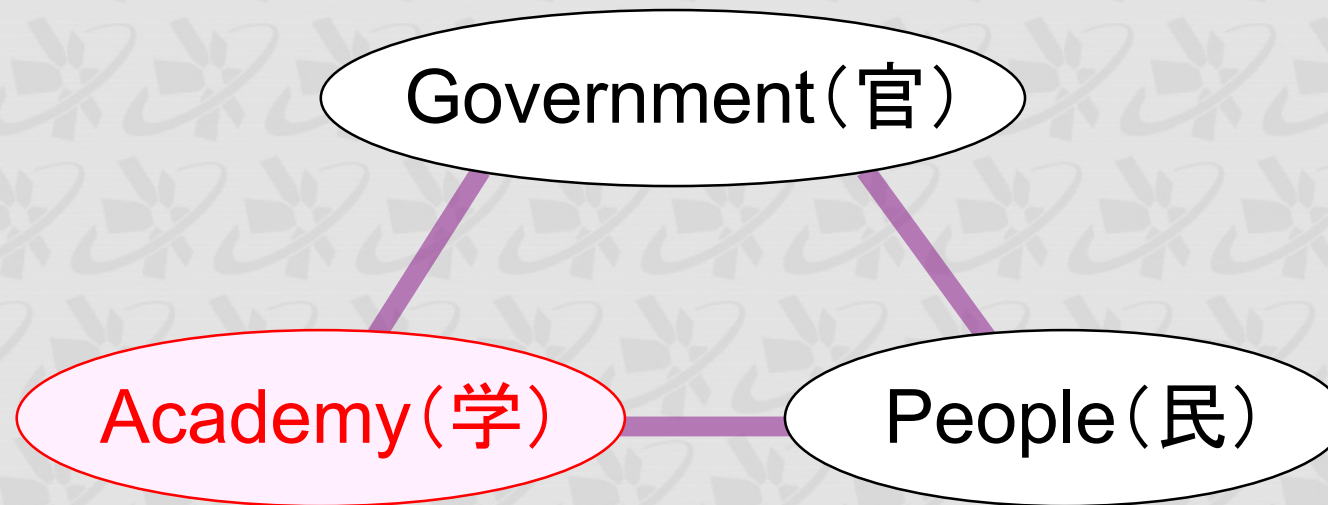
Love

♥ Information Transmission

♥ Sympathy & Sharing



Sectors



Who are You ?

Whom are You talking with ?



Collaboration

Keep a Log !

- ♠ All the things which you have done
- ♠ All the reasons why you did them

Start

♣ Presentation Goal

What do you want the audience after your presentation ?

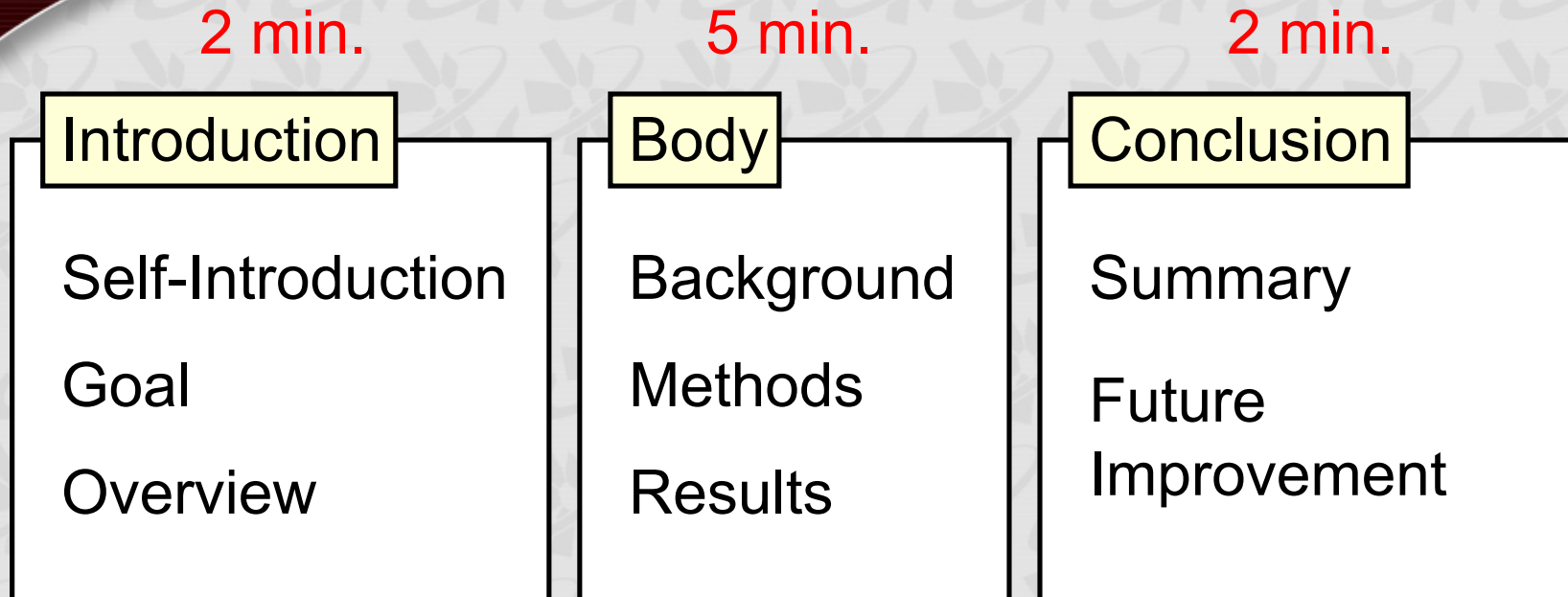
♣ Audience Analysis


Will they listen to you ?

What do they want to know ?

What is the merits of your presentation for the audience ?

Presentation Structure



Audience  Decides to listen at 3 min.
Evaluates worth at 6 min.
Makes decision at 10 min.

Visual Presentation

- ★ Do not use very long equations
- ★ Do not write too many sentences
Max. \approx 8 sentences
- ★ Maximum 7 to 8 pages in 10 min.

You should not force the audience to read your manuscript

Oral Presentation

- ♣ Good preparation
- ♣ Pace
- ♣ Speak clearly and relatively slowly
- ♣ Keep language short and simple
- ♣ Emphasis and Intonation
- ♣ Gestures and Stance
- ♣ Eye contact
- ♣ Your style

Stop

Words : 7%
Emphasis : 38%
Gestures : 55%



Time Quiz

How long did it take from “Start” to “Stop” ?

Family Name **Kishida**

13 min. 35 sec.



Presentation Session

Second Week

October 9, Tue.

9:45—10:45 Lecture 9 “Accelerator”
11:00—12:00 Lecture 10 “Safety Training”
Lunch
13:00—17:00 Experiment 1

October 10, Wed.

9:45—12:00 Experiment 2
Lunch
13:00—16:00 Experiment 3
16:00—17:00 **Interim Review**

October 11, Thu.

9:45—12:00 Experiment 4
Lunch
13:00—17:00 Experiment 5

October 12, Fri.

9:45—12:00 Experiment 6
Lunch
13:30—15:30 **Preparation**
16:00—17:30 **Presentation**
18:00 Closing Ceremony

1 for “Training A”

1 for “Training B”

1 for “Training C”

5 for “Experiments”

(“Mono Energy β ”, “DALI Clock”)

1 for “Summary”

Nishina School 2012.10.02

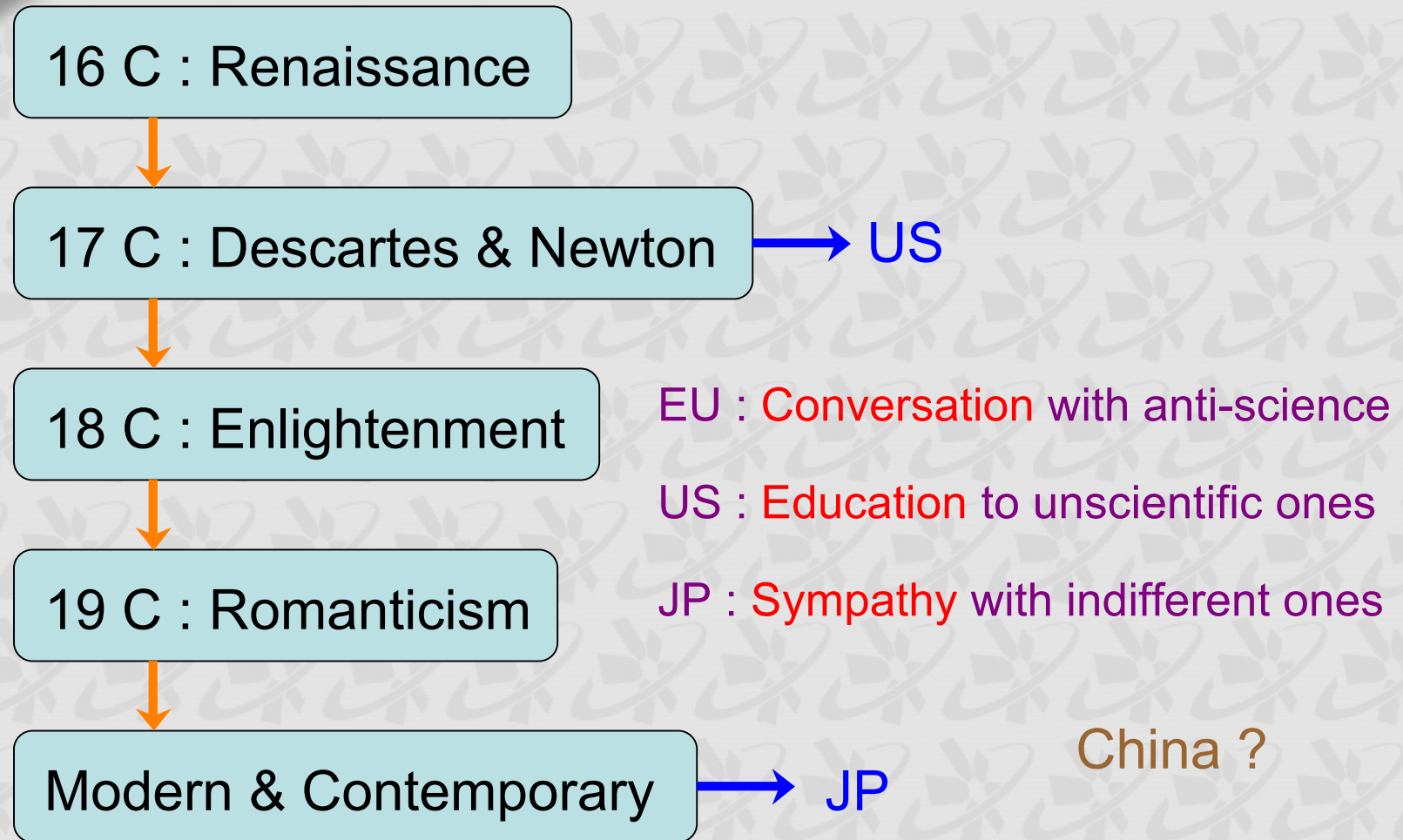
Academy (学)



People (民)

- ❖ Lecture
- ❖ Museum
- ❖ Open Campus
- ❖ Books and TV program
- ❖ Science Café, Science Festival

World History and Science Communication



People's Power

Politicians

Bureaucrats

Experts

People

Voting

Consumption

Opinion

Desire

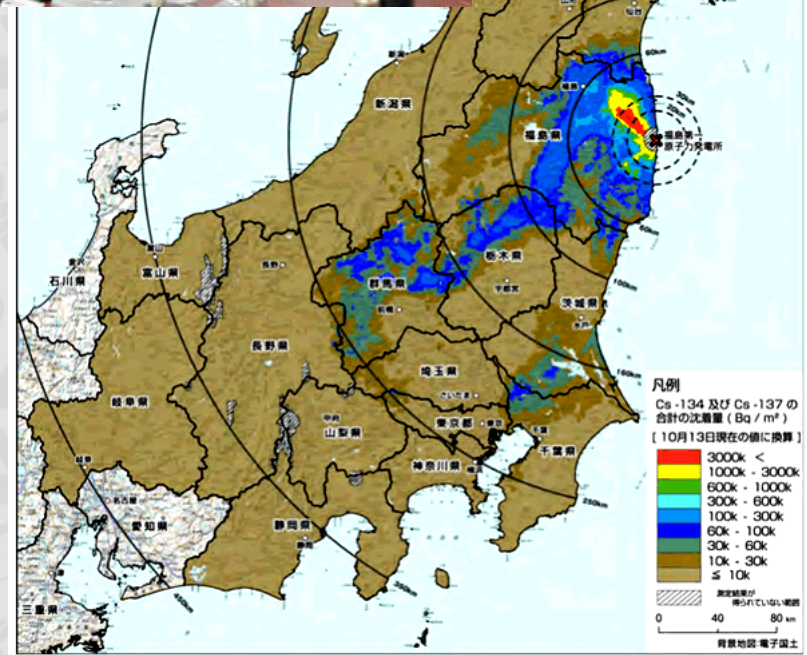
Favor

Life-Style

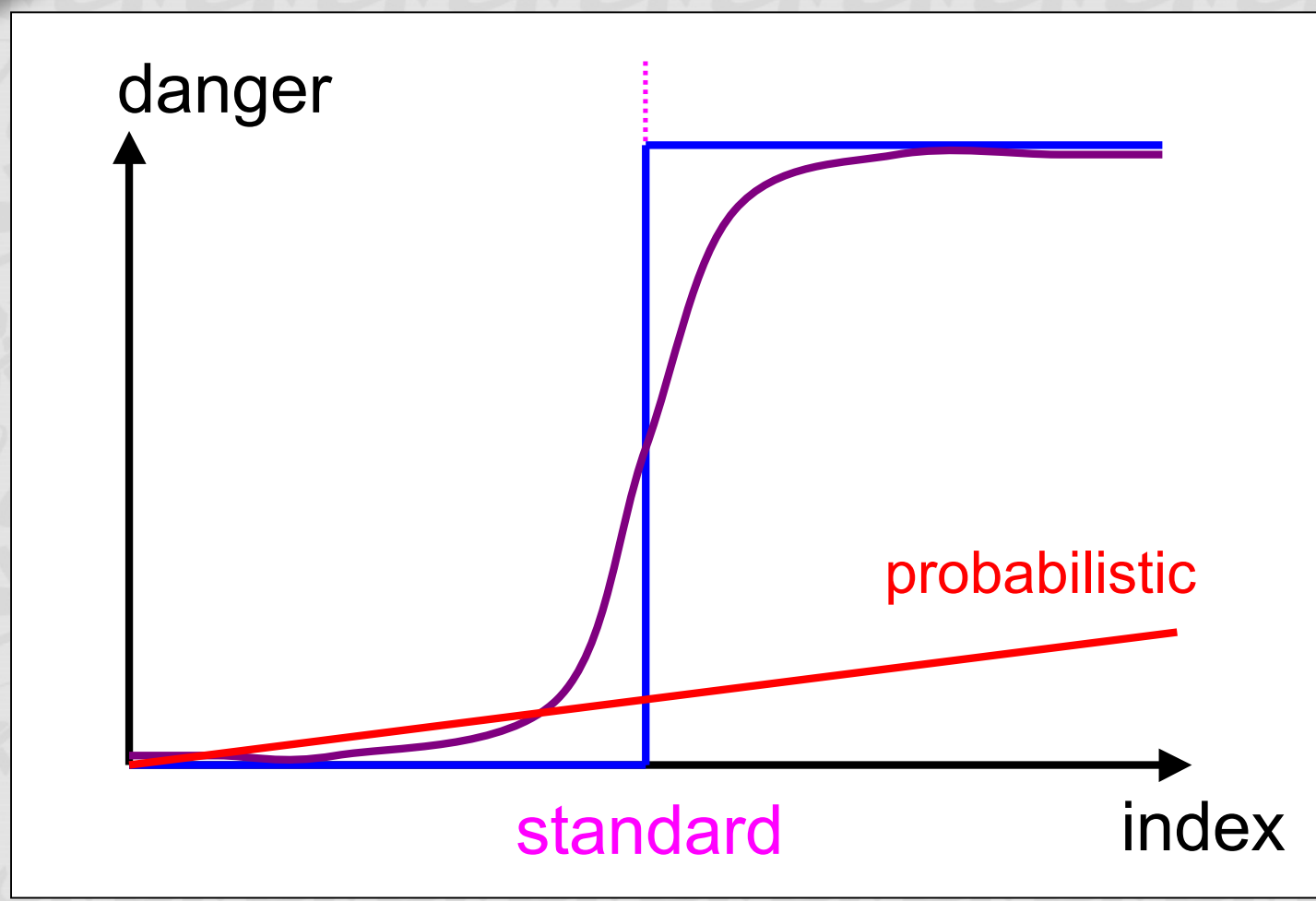
Sense of Science ?



Fukushima Accident



Standard & Control - ism



Beyond Standard & Control - ism

People will make decision by judging risk.



Government and Company give exact information to make mutual agreement.



People

Watching situation carefully.



Government
Company

Improvement by taking into account of danger.



Future of the World

Not “Growth”, but “Ripeness”

It is YOU who make the Future !



Welcome Party

Welcome Party

@ Main Cafeteria

From 18:00

Nishina School 2012.10.02